



Mailing Address
 P.O. Box 1398
 Mattoon, IL 61938
 (217) 235-6744
 coleshistory.net

Dudley House
 895 7th Street
 Charleston, IL
 (217) 345-2934

**Research Center
 & Museum**
 ICRR Depot
 1718 Broadway
 Mattoon, IL
 (217) 235-6744

Greenwood School
 800 Hayes
 Charleston, IL

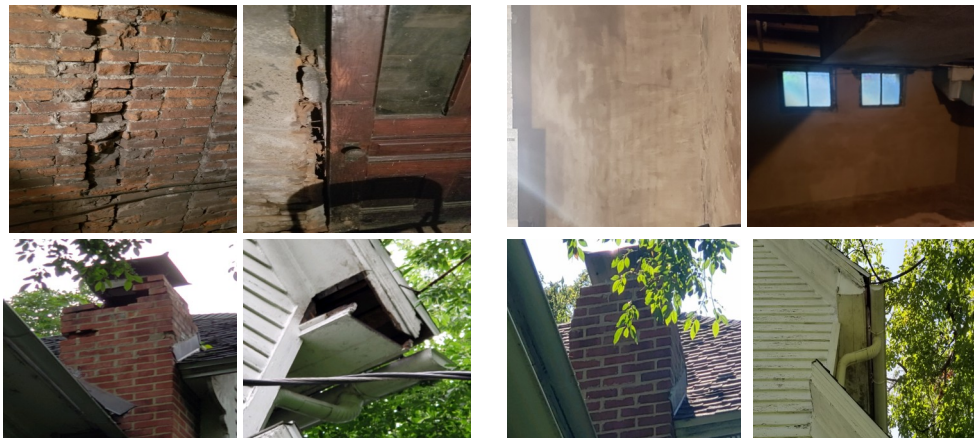
Inside This Issue:

Leadership	1
Dudley House/ Greenwood School	2
Suffragette Exhibit	2
Calendar of Events	3
Membership	3
Annual Meeting	4

COLES COUNTY HISTORICAL SOCIETY

December 2019 Edition

The Dudley Property has had numerous repairs completed this year. The chimney partially collapsed and was repaired by Kyle Keefer from Keefer's Restoration. (See pictures below). The basement foundation was also in severe disrepair and needed to be re-bricked and sealed, which was completed by Keefer Restoration. (See pictures below). The southeast corner of the roof had façade and soffit deterioration and also needed repairs, that were completed by Fidelity Construction Services, Inc. The repair projects, including the Carriage House cost in excess of \$20,000. The Historical Society Board has been aggressively seeking grants and funding for the current repairs and future repairs that could cost an additional \$60,000, including a new roof, siding repairs and exterior painting.



Before Pictures Dudley House Repairs After Pictures

Society Leadership

Officers

Ed Dowd: President
 David Schilling: Vice President
 Janett Winter-Black: Secretary
 Sandra Graven: Treasurer
 Larry Gutzler: Past President

Board Members

Tim Gover Dale Wolf
 Tom Graven
 Jerome Groniger
 David Maurer
 Jessica Meadows
 Brenda Taber
 Charles Titus
 Norma Winkleblack

Dudley House & Greenwood School

The Dudley House and Greenwood one room school house were utilized for their historical significance as part of a movie project in production by local actors and producers. The Greenwood School was originally constructed in the early 1860's in Ashmore Township and operated until 1948. The CCHS moved the Greenwood School to its present location on the campus of EIU in 1975. The Dudley House was built in 1892 and was given to the CCHS in 1982. Dr. Dudley and his wife were the longest term residents from 1920—1960. Original artifacts, including medical equipment are available to view upon request. You can call the Research Center phone number at (217) 234-6744 and leave a message to make an appointment.

The Mattoon Train Depot Museum will be hosting a Women's Suffrage exhibit this spring in honor of the 100th anniversary of women finally receiving voting privileges in elections. Local historians Steve Thompson and Carolyn Cloyd have been working diligently on creating content for the exhibit. Carolyn Cloyd expressed "It's really a fascinating story of determination and grit by the suffragettes and their male allies" Thompson and Cloyd are titling the year long celebration the "WS 100 Project" with the help of Intrepid Consulting Services, Inc. The Coles County Historical Society and Wells Fargo Advisors.



Carolyn Cloyd in period garments representing the Suffragette movement.

For more details regarding the exhibit or to contribute contact Steve Thompson 217-254-1524 or skthompson@mchsi.com. Carolyn Cloyd 217-235-4984 or ccloyd@consolidated.net

Calendar of Events

Museum at the Depot: Open on Saturdays 1:00 pm - 4:00 pm (subject to change) Museum tours are also available by appointment. Contact Ed Dowd at 549-0442. The museum is located in the basement of the Illinois Central Railroad Depot, 1718 Broadway Avenue Mattoon, IL. (We are looking for volunteers at the museum so we can increase availability to the public. Contact Ed Dowd if you are interested)

Santa at the Depot (See Insert)

Coles County Historical Society Annual Meeting: Sunday, January 19th, 2 pm
In the Lone Elm Room at the IC Depot. All members and the general public are welcome to attend. More details are available on the last page of this newsletter.

Yearly Membership Renewal Form

The CCHS, incorporated in 1954, exists to preserve and interpret the history of Coles County. We take seriously the responsibility to provide multiple opportunities to discover meaning in the local past and its relation to national and international events. Your support helps to sustain programs and properties owned and administered by the society.

Please take a moment to join or renew your yearly membership and to consider an additional donation to the cause of your choice. Just complete the form below and return with a check to:

The Coles County Historical Society
P.O. Box 1398
Mattoon, IL 61938

Name: _____

Email: _____

Address: _____

City: _____ State: _____

Membership Level (check one) ___ \$1,000 Corporate Sponsor
___ \$500 Benefactor ___ \$200 Patron ___ \$100 Sustaining ___ \$50 Sponsor
___ \$25 Friend ___ \$10 Student ___ \$ (Other)

Project Support (donation above & beyond dues): \$ ___ Greenwood School
\$ ___ Dudley House \$ ___ Museum \$ ___ Endowment Fund
\$ ___ Research Center

___ I prefer my name and contributions not be publicly acknowledged

COLES COUNTY HISTORICAL SOCIETY
P.O. Box 1398
Mattoon, Illinois 61938

Coles County Historical Society Annual Meeting

Sunday January 19, 2020

2:00 pm

Lone Elm Room

Mattoon Train Depot, 1718 Broadway Avenue

The program will include a presentation:
Eastern Illinois University: Then and Now
By Terry Weidner

Light refreshments will be available

All Historical Society Members and the general public are encouraged to attend